

### Estates meeting July 2022 @7.45

1. Quote received for repair to play equipment in the memorial park, awaiting parts for fitting. Date given is the 14/07/22.
2. **Green Lane Rec**- Long grass extended in area backing onto Church Road. Whilst on site I have received positive comments from park users including dog walkers. Lots of clover for bees to feed off. Poppies and daisies are showing through now.

A Betula Pendula Youngii has been planted in the area and there will be extra trees planted in Autumn via funding from a donation as discussed at June meeting. Due to planting in late spring this will need regular watering which can be completed at same time as hanging baskets.

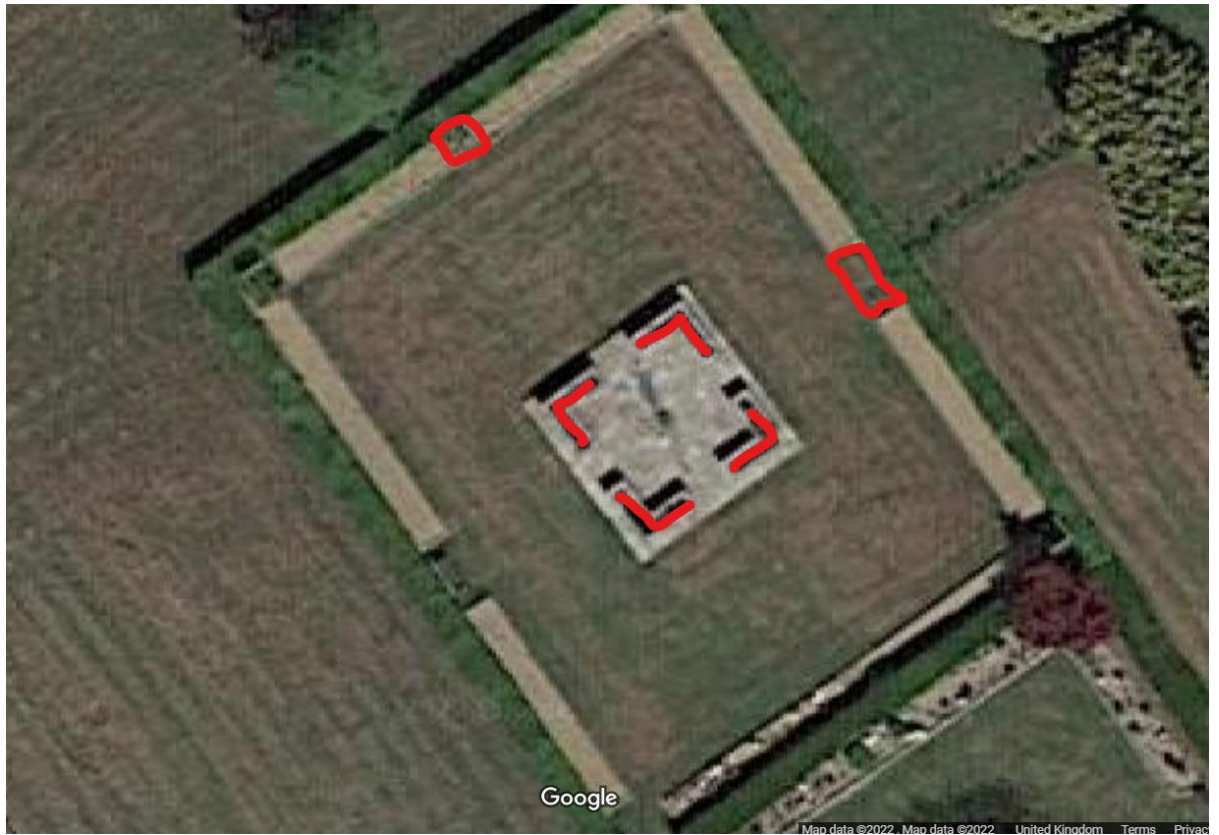
Thank you to Meryl and Ray for their assistance on the day





3. Hedges on roadsides have been cut, old churchyard, Putlands Field, Day Centre,
4. Cemetery- hedges are being cut around the ashes plots.
5. New line marker has arrived and been on a demonstration from the supplier. Marking out from scratch has been started.
6. Kubota lawnmower- during use it was starting to display signs of the belt wearing out, so this has been changed and a new one ordered as a spare for the mowing deck.
7. Quote received to repair the water bowser tank (replacement moulded tank will be added) which will prolong the water bowsers lifespan. We will then need an auto electrician to resolve the problem of the pump only working when the tractor engine is switched off (if left this is going to continually damage the battery on the tractor).
8. Tree work has been carried out in the Old Churchyard to remove a dangerous tree. Shrub works to be started in autumn /winter around other works. German war graves have not been located. Quote received for strimming the whole plot twice a year to manage and maintain the grass areas.
9. Tree work also carried out to pollard the willows and to lift the canopy of the Oaks to the side of the Bowling Green at Putlands recreation field.
10. Green lane- long grass areas have been modified; all other sites will follow.
11. Met with Cllrs Bisdee and Sargison on 01/07/22 to prepare tree planting locations. (See separate report and map)

12. New garden of remembrance, I would suggest in autumn and winter with some pruning and spacing out of existing planting that roses could be added into the planting scheme in the raised beds. As well planting could



be undertaken in the small areas in the plot set aside for planting.