

R2 37 -
Deteric

Handwritten graffiti in white paint, including the words "POST" and "NIGHT" written vertically.

Handwritten graffiti in white paint, including the word "LOVE" written in a stylized, circular font.

Large, stylized graffiti piece in black and red paint, featuring a complex, abstract design with thick outlines and a central area filled with white and grey paint.



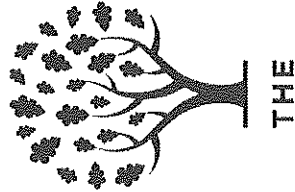
ES 31 41fev



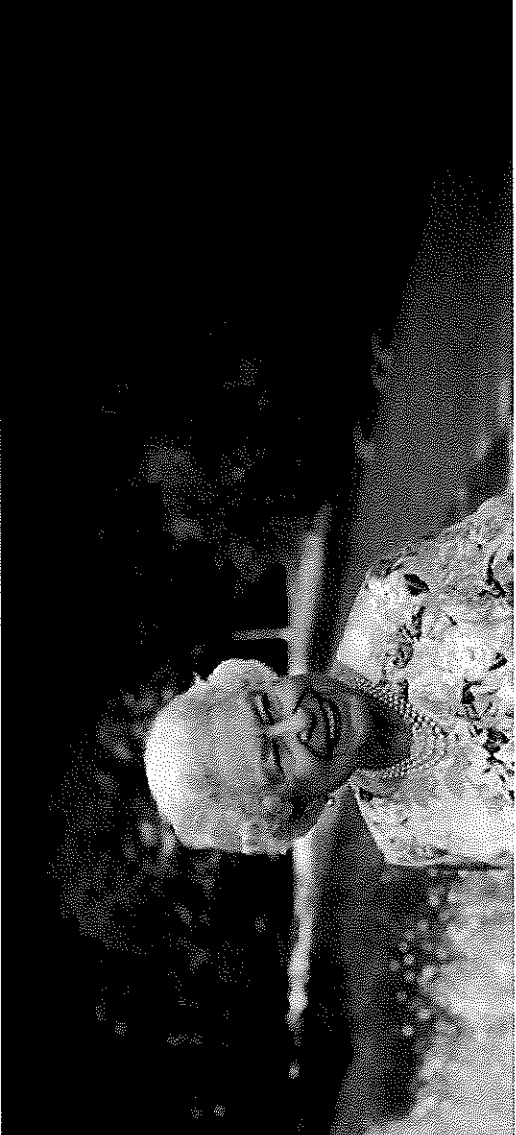
£ S 38 (b)

**“PLANT A TREE FOR
THE JUBILEE”**

**THE
QUEEN’S
GREEN
CANOPY**



—
THE PLATINUM JUBILEE 2022



The Queen's Green Canopy (QGC)

A tree planting initiative created to mark Her Majesty's Platinum Jubilee in 2022 which invites people from across the United Kingdom to "Plant a Tree for the Jubilee."

<https://queensgreencanopy.org/>

Tunbridge Wells Borough Council would like to work in partnership with Town and Parish Council's and 'Friend's' groups to support this important initiative.

Seeking pledges from organisations to work with us to plant trees in the Borough for 'The Jubilee'



Proposal

Tunbridge Wells Borough Council

- 700 saplings provided for free
- 70 specimen trees at subsidised rate
- Coordinate activity with you to ensure a good spread of new trees
- Work with you on communications and press releases
- Liaise with 'The QGC' on ancient trees and ancient woodland
- Guidance on: -
 - When and where to plant
 - Right tree right location
 - Planting advice sheet and aftercare

Partner Organisation

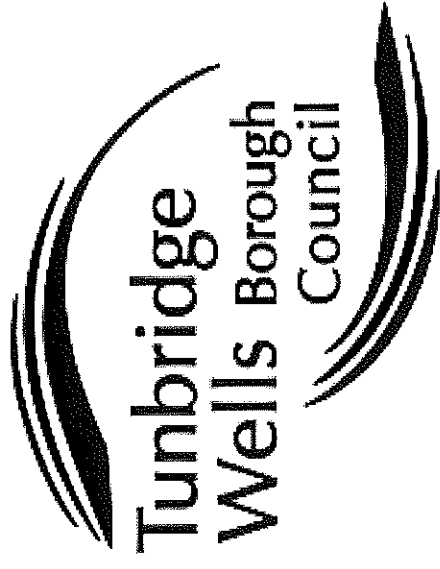
- Request the number of saplings required and propose how they will be distributed
- Request the number and type of specimen trees required and propose suitable locations
- Organise and arrange distribution and planting of trees with your communities, schools, volunteers and groups
- Opportunity to order a plaque to mark the occasion via the QGC website
- Pin your Jubilee tree to 'The Queen's Green Canopy map' [Jubilee Map](#)

Timetable



- Parishes send in request for the number of saplings required and propose how they will be distributed - by end October
- Parishes send in request for the number and type of specimen trees required and propose suitable locations - by end October
- TWBC confirm numbers of trees that are available to each Parish – start November
- Trees delivered – November onwards

Contacts



Pledging your support -

Paul.Taylor@Tunbridgewells.gov.uk

Director of Change & Communities

Advice on tree planting and right location –

Jeff.Mashburn@TunbridgeWells.gov.uk

Tree Officer

