



LOCAL NATURE RESERVE

NEWSletter

Issue No 175

March 2019

HAS SUMMER STARTED ALREADY?

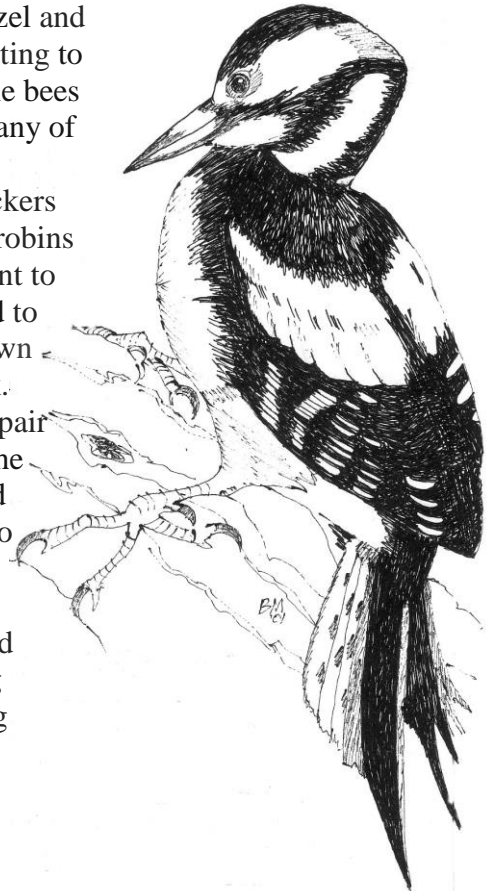
The 24th of Feb was a fine, sunny and quite warm day with a cool breeze. Five people came to work on the hedges and we accomplished about half of the allotted task. While I trimmed the hedges with a petrol hedge trimmer the others cleared the debris and took out the thicker stems which the machine could not cope with.

We completed the car park hedge and all along the hedge at the south side of the allotments but had to stop at the opening to the Orchard meadow because quite frankly, I was tired from working the hedge trimmer for three hours. As a result we all cleared up at a little after 12 and went home for what I hope was a nice relaxing afternoon in the sun. Ray and I finished up on the following Wednesday.



I noticed the blackthorn was coming into blossom and the hazel and hawthorn were both starting to show leaves. The bumble bees were out in force and many of the birds were declaring territories with woodpeckers drumming on trees and robins singing loudly. Alex went to look in the dipping pond to see if there was any spawn yet but without any luck.

However, I have seen a pair of mating frogs in my pond at home. Before this, on the 6th of Feb, I finished clearing the coppice area and had a wander round the wood. The wetland had filled up to within a foot of its limit and is still quite full. I saw a fox skirting the southern tree line heading towards Brick Kiln Wood. Bluebells were progressing well and the birds all seemed to be interested in finding nesting materials. On three occasions I saw blue tits collecting moss.



FHW NEWS letter

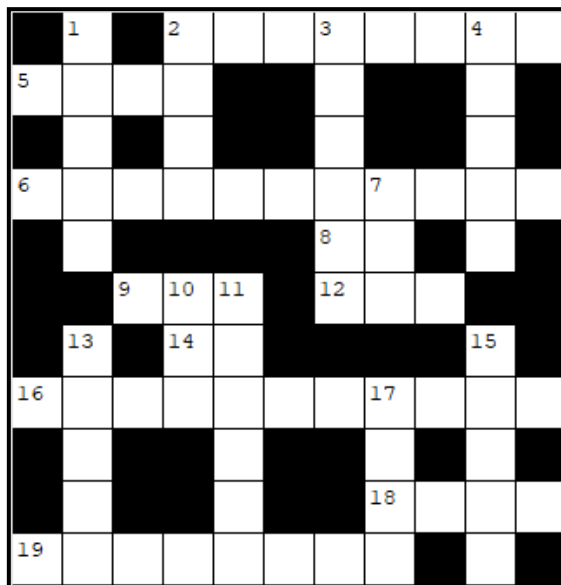
Berkeley Homes moved on site at Mascalls Farm during the last week of January and come the 4th February their contractors were working in the orchard next to Foal Hurst. They felled most of the orchard trees on the east side of the wood and grubbed up the roots, in order to erect the fence between us and them. The next task after that will be to excavate the drainage ponds. By the 6th Feb almost all the orchard trees were down in both orchards except the row of trees closest to the wood. These are all old trees with substantial trunks and will make a nice barrier between the ponds and the nature reserve.

By the 24th the trees were down and many of them had been chipped ready for the building work to begin. If you have been along Badsell Road you can't have missed the devastation. **Please note, our next volunteers' day will be on Sunday April 7th** due to Mother's day being the week before. We will be building beetle pyramids and enhancing some of the log piles strewn around the Orchard Meadow.

See you all at 09.25 in the Badsell Road car park

Peter Prince

FHW Crossword No 142



Clues Across

- 2 'with' 6 across, 3 down. All that's left (3,5,11,6)
 5. Flightless S. American bird.(4).
 6. See 2 etc. 8. Render unconscious, (1.1).
 9. Latent flower. (3). 12. Disperse seeds.(3).
 14. Direction,(1.1). 16. Formed by 2 across etc, ((4,7).
 18. Canines,(4).19. FHW area next to orchard, (4,4)

Clues Down

1. Small tree,(5). 2. Quercus family, (4). 3. See 2 across etc. 4. Written composition, (5). 7. Also, (3).
 10. Employ, (3). 11. Detritus,(6). 13. Flower or musical instrument, (5). 15. Natural barrier,(5).
 17. Path through woodland, (4).

Solutions to FHW Crossword No 141

Across 1. Lizard. 4. Long. 6. Or. 7. Tit 8. Hedge.
 11. Iffy. 12. Vixen. 13. Molar. 14. Evil. 16. River,
 17. pod. 18. AD. 19. Dogs. 20. Beetle.

Down 2. Zit. 3. Deer. 4. Log piles. 5. Ore.
 7. Trimmer. 9. Handled. 10. Pyramids. 15. Herrb.
 16. Rag. 17. Pet.

Any News?

Items for the next Issue by
 6th April please, to:-
 80 Forest Road, Paddock Wood
 Kent TN12 6JX
 email b.mace452@btinternet.com