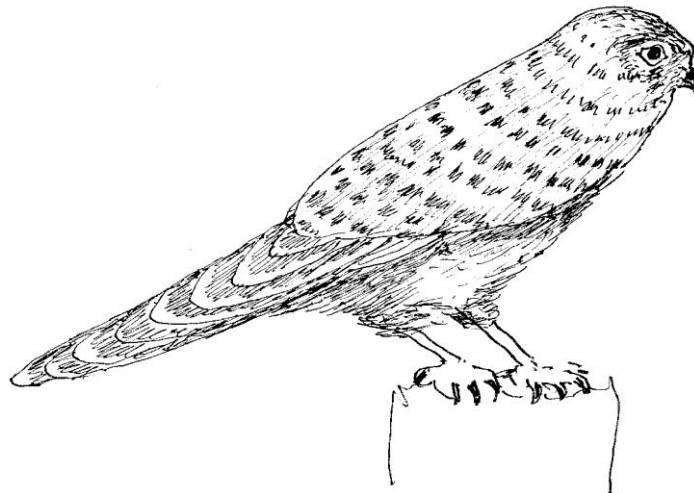


## What's another summer?

Hello everyone,

Another summer is over, and it is time for us to volunteer again, but first, this. I was unable to visit the wood until Wednesday May 22nd when I noted the ponds were all rather low except the pond by the new culvert. Here the stream was still flowing and providing a good water supply. The tadpoles were doing well and were almost ready to produce legs. That day I finished the two beetle pyramids which should have been constructed in April.



*Kestrel*

On the 29<sup>th</sup> I moved logs to improve the log piles in the Orchard Meadow, and finished placing weed suppressant mat around the orchard trees. The tadpoles were bigger but still no legs. I did see several toads and frogs in the Orchard Meadow, a kestrel settled on the overhead electricity cables and a lark was singing merrily for much of the morning. I always thought that the larks nested in the Orchard Meadow but it dropped to the ground behind the road hedge so I think they have been nesting in the field of crops on the other side of the road, shame! I disturbed some deer drinking at the small pond in the Orchard Meadow. Usually we see fallow deer but these were smaller with fewer branches in the antlers so they were roe deer. It was the first time I have seen roe deer in the wood but as they are common on Ashdown Forest where our deer come from, I see no reason why they shouldn't visit our wood. There were several voles around and lots of butterflies including peacock, common blue, speckled wood and small white. There were also several damselflies both narrow-winged and broad-winged. and should look very good by the our coppice area was host to a pair of sparrows in the hedge close to the



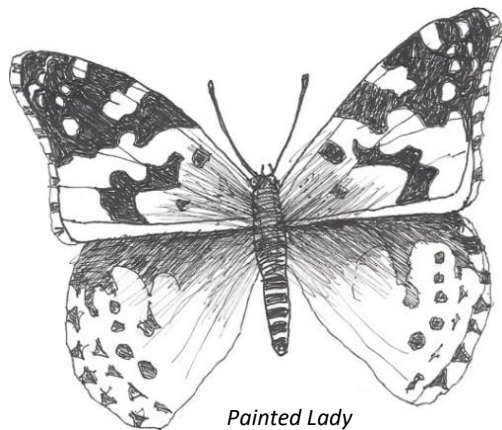
The newly laid hedge is doing well autumn. One of the dead-hedges in wrens and there was a flock of tree small Orchard Meadow pond.

*Field Vole*

# FHW NEWS *letter*

On the 12th June the tadpoles had back legs and a couple of deer were on Muddy Way. Then, on June 19th the tadpoles were tiny frogs, all vestiges of a tail having vanished. By the 26th the frogs had all left the pond. On the 29th Simone and I watched dragonflies emerging from their nymph shells. It is amazing how long it takes them to fully dry out. On the same day we saw either a white admiral or a summer map butterfly. The problem with identification is that a white admiral should be about 6cm across while the butterfly we saw was not that big. However, the map which can be anything from 2.5 — 5 cm doesn't have quite the same markings as what we saw. I was unable to take a photograph because as soon as I tried, it closed its wings and then flew off. Isn't that always the way? I am inclined to say it was a map simply because the under-wing markings were nothing like the admiral's.

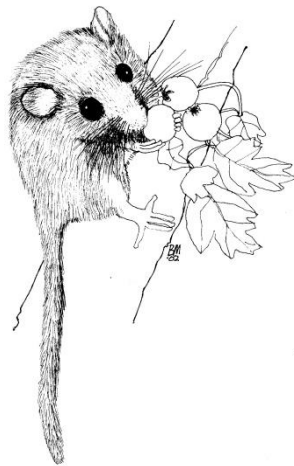
While digging a ditch in the north of the wood I came across an Angle Shades moth (*Phlogophora meticulosa*) resting on the ground. I had great difficulty taking its photograph due to the lack of light under the trees, however it is a nice specimen to have in the wood. During the summer I have seen several different butterflies and moths including the usual Peacocks, Red Admirals, Marbled White, Meadow Brown, Speckled Wood, Small White, Large White, Gatekeeper, Small Tortoiseshell, Common Blue, and Comma. I have also seen rarer visitors such as the Orange Tip, Painted Lady, Brown Argus and Small Copper. I was dubious about the Argus until I checked it in the book.



*Painted Lady*

At some point in the spring/summer Berkeley Homes planted a large number of two year old whips in the top of the old orchard at the south east corner of the wood. Sadly, by early August many of them appeared to have died. It's a shame because they planted a good variety of saplings including hornbeam, hazel, blackthorn and hawthorn. It is possible they will regenerate next spring as some of those that looked (lead actually had new green buds waiting to open. It will depend on how much rain we receive between now and next spring.

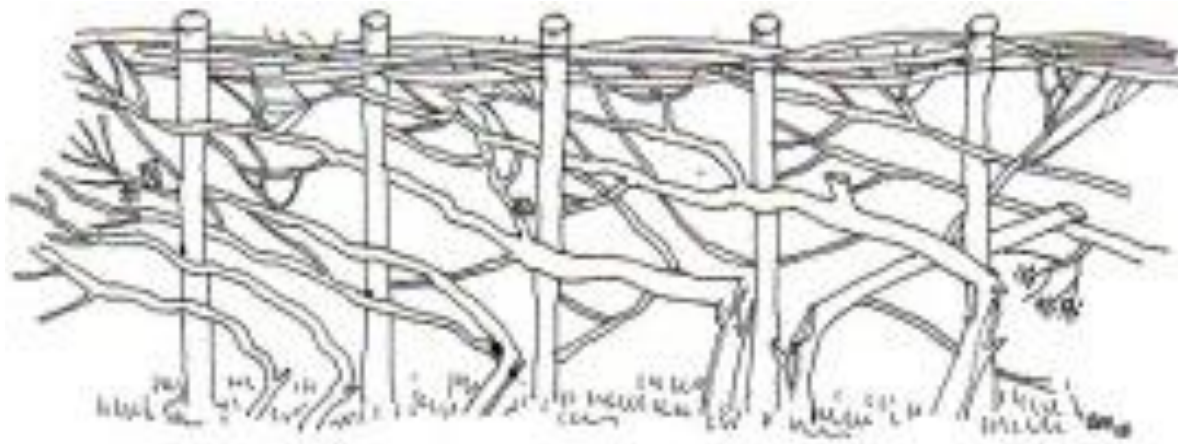
On the 6th and 7th August I heard a juvenile tawny owl calling to be fed. Since the tawny owl box was placed on the south side of the wood the birds have regularly produced young, which is very heartening. Soon, the parents will drive the youngster away to find its own territory.



During mid to late August Ray strimmed muddy way and the flower meadow was mown. The grass was not removed from the flower meadow due to my being away when it happened and the grass had grown too long again to manage with rakes when I returned.

On the 29th August I removed much of the reed mace in the dipping pond. The pond was dry and easy to explore. I also removed 27 bottles and cans. I have reliable information from Steve Songhurst that there was a pregnant female dormouse in one of the boxes during the August survey. Hopefully the young will be able to fatten up for winter between now and when they go into hibernation. It will depend much on the hazelnut harvest.

# FHW NEWS *letter*



Of course the main reason for this newsletter is to let the volunteers know when the work days will be this coming winter. So, here goes.

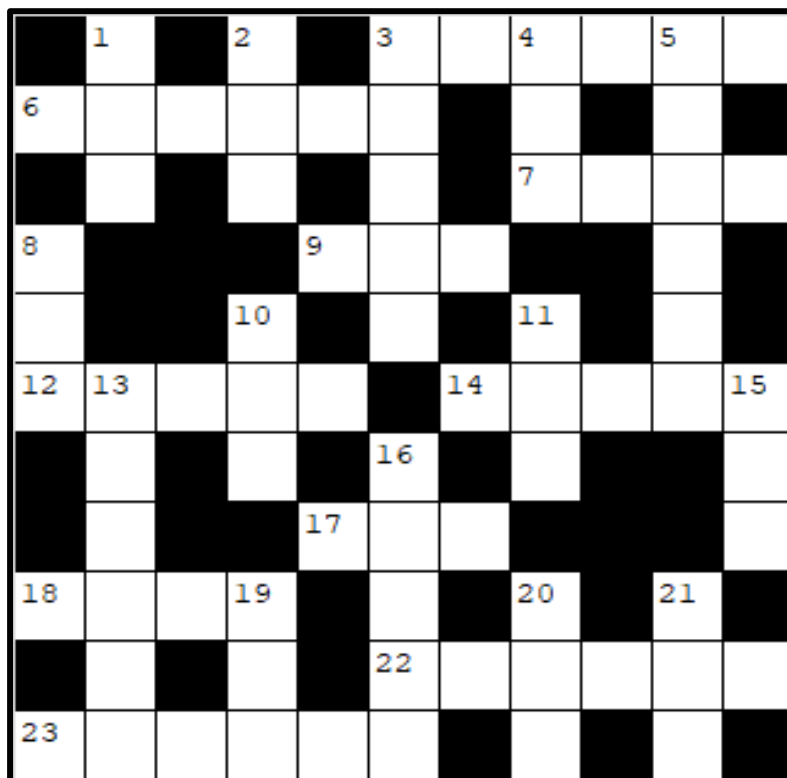
Sunday Date	Planned activity	Exercise involved
September 29 <sup>th</sup>	Hedge laying preparations	Lopping, sawing, clipping, building, dead-hedges
October 27th	Coppicing and dormice habitat improvement	Sawing, stacking logs, log splitting, building dead-hedges
November 24th	Coppicing and dormice habitat improvement	Sawing, stacking logs, log splitting, building dead-hedges
December 29th	Coppicing and dormice habitat improvement	Sawing, stacking logs, log splitting, building dead-hedges
January 26th	Hedge laying	Lopping , sawing , weaving
February 23rd	Hedge laying	Lopping , sawing , weaving
March 29th	General work on paths and hedgerows	Bramble bashing, hedge trimming etc.

This year we have the unique situation where we will be working in two areas at the same time. Previously we have coppiced the far north-west corner and two sections on the north side. This time we will be working either side of the two sections in the middle of the north side covering about a third of an acre each.

See you on the 29<sup>th</sup> Sept. at 9.30 in the Badsell Road car park, bring your family and friends.

*Peter Prince*

## FHW Crossword No 144



### Clues Across

3. Month, (6). 6 & 22. Mown in 3, (6,6). 7. Branch, (4). 9. Latent flower, (3).  
 12, 2&21 down, Placed on the south side of wood, (5,3,3). 14. Plants of a region  
 or period, (5). 17. Variety of 8 down, (3). 18. Underground storage system, (4).  
 23. Mystery, puzzle, (6).

### Clues Down

1. *Ulmus minor*, (3). 2. See 6 across. 3. Butterfly – Brown, (5). 4. Glutinous  
 substance, (3). 5 & 20. ‘Seasonal Butterfly’, (6,3). 8. Hard cased fruit, (3). 10. Definitely  
*Not a Hartebeest*, (3). 11. Aged, (3). 13. Season, (6). 15. Eusocial insect, (3).  
 16. *Punctuated* Butterfly, (5). 19. Insect (collq), (3). 20. See 5. 21. See 12 across.

### Solutions to FHW Crossword No 143

**Across** 5. Hundred. 7. Ash. 8. Two. 9. Acre.  
 10. Bar. 12. Yeti. 13. Urge. 16. Its. 18. Owls.  
 20. App. 21. Doe. 22. Jackdaw.

**Down** 1. White. 2. Snooze. 3. Talc. 4. Three.  
 6. Rabbit. 14. Guards. 15. Toads. 17. Spawn  
 19. Leek..

### Any News?

Items for the next Issue by  
 6<sup>th</sup> October please, to:-

80 Forest Road, Paddock Wood  
 Kent TN12 6JX  
 Email b.mace452@btinternet.com